

Monitor Building Performance with Powerful Analytics Advisor Services for Commercial Office Spaces

AIRCUIITY ADVISOR™ SERVICES IS POWERED BY INNOVATIVE analytics that analyze data collected by the installed OptiNet® system and present it in a variety of visual formats designed to be intuitive and actionable. Based on Aircuity's extensive knowledge of ventilation requirements relative to Indoor Environmental Quality (IEQ), hundreds or thousands of data points are analyzed and presented in their most meaningful format.



Dashboard: Information is fed to dashboard components (dashblocks) which may be arranged by users to present a broad spectrum of IEQ, ventilation and comfort information in a concise visual display. Users adjust:

- › **Scope:** Building, Floor/AHU, and Room-level displays
- › **Granularity:** Day, Week, Month, and Year
- › **Date:** Calendar Day, Week, Month or Year from initial start-up to the current date

Smart Notifications™: Users can configure email notifications based on the analyzed information. Users can select:

- › Parameter and measurement type
- › Locations to evaluate based on a specific threshold
- › Frequency of the analysis period (hourly or daily)
- › Distribution list of the email notification

Notifications are grouped based on events associated with a particular parameter that exceeded the threshold—meaning there is some relation between the event and the spaces listed.

Summary Reports: Users may configure periodic summary reports, which include just the IEQ, ventilation and comfort parameters and measurements for the spaces of interest to them. Color-coded to highlight areas of interest, the report also identifies the “most affected” spaces. Reports are distributed on a weekly or monthly interval to a user defined distribution list.

DASHBLOCK/ANALYTIC

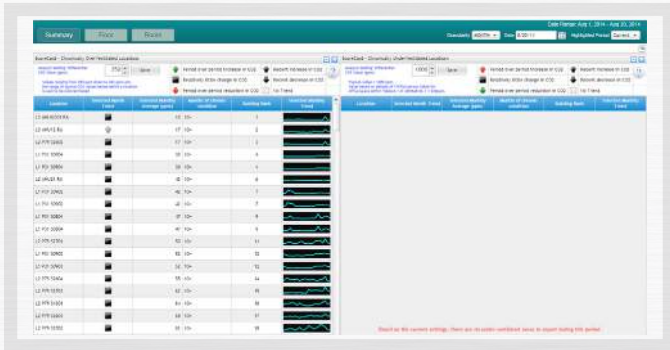
The number and types of dashblocks available are dependent on the OptiNet sensors installed. Parameters related to IEQ, comfort and ventilation analysis are typically available as Smart Notifications and configured within the Summary Reports.

While these novel analytics feed the Smart Notifications and Summary Reports as a means of bringing issues to your attention, it's the dashblocks in the dashboard viewer that provide the greatest information. Different visual formats have been designed to provide the specific information in the most intuitive and informative way.

Aircuity Advisor™ Services for Commercial Office Spaces

Advisor Services offers analytics that are beneficial to a variety of personnel. The examples below highlight analytics that deliver insight about the environment.

OVER/UNDER VENTILATION SCORECARDS

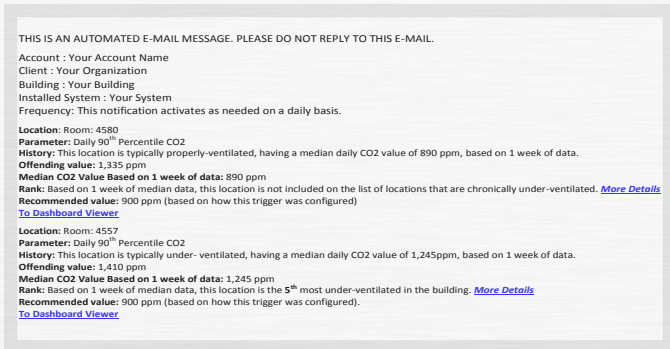


The ScoreCard evaluates and ranks spaces deemed to be over or under ventilated based on CO2 levels. Users can sort by the following headings.

- › Location
- › Day/Wk/Mo/Yr trend (increasing/decreasing/same)
- › Day/Wk/Mo/Yr average ppm
- › Day/Wk/Mo/Yr of chronic condition
- › Building rank based on Day/Wk/Mo/Yr averages

Over ventilated spaces may be wasting energy while under ventilated spaces may be unhealthy and hinder productivity.

SMART NOTIFICATIONS™

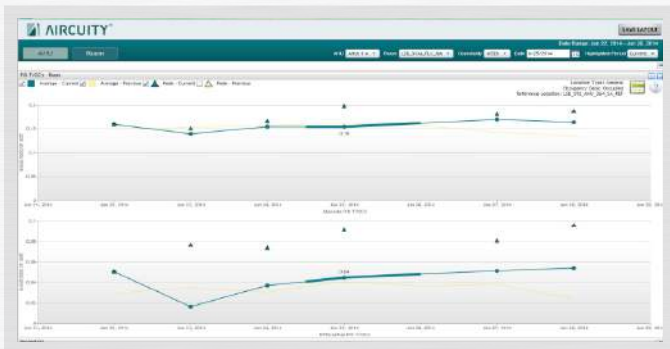


Over ventilated spaces waste energy while under ventilated spaces may impact the health and productivity of occupants. Smart Notifications™ provide:

- › A list of the spaces most over or under ventilated, ranks them by severity and indicates if it is a normal or abnormal occurrence based on user defined thresholds and statistical analysis.

Hyperlinks take you directly to the ventilation ScoreCard for further analysis.

IEQ



The following parameters can be viewed by space (bar graph) and over a selected time period (line graph).

- › CO
- › CO2
- › Particles: 0.3–2.5µm
- › TVOCs: MOS sensor, PID sensor
- › Temperature
- › Relative humidity

The graphs present Average and Peak values displayed as Absolute and Differential readings (where appropriate).

SUMMARY

The data collected by the OptiNet system is stored, analyzed and presented in a concise easy to understand format. Data is analyzed before it is presented so users do not have to analyze it on their own. Run-time controls allows users to select what they want to see over any time frame and displays it in different ways—average or peak values as either differential or absolute measurements, compared to other spaces or displayed over time. They say that 'information is power' and all this power is available with just a few mouse clicks.

For more information on Aircuity Advisor™ Services visit <http://www.aircuity.com/services/aircuity-advisor-program/> or contact your local Aircuity representative.